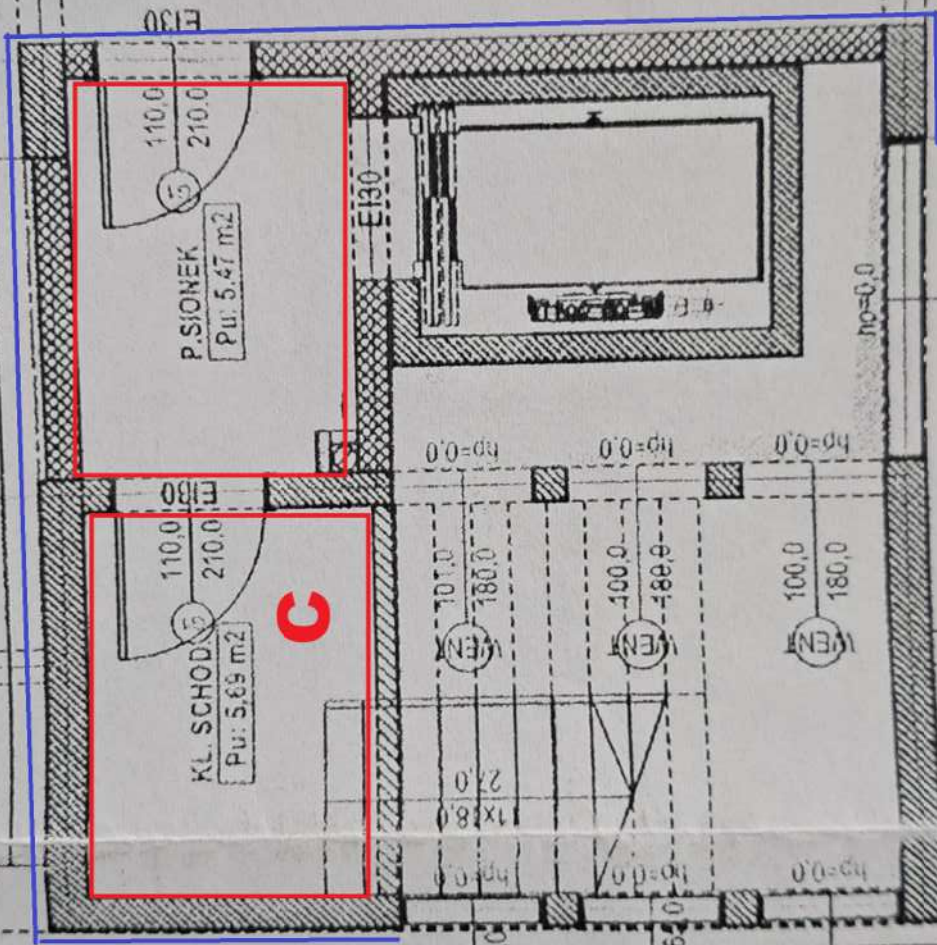






140



EI30

110,0  
210,0

P. SIONEK  
Pu: 5,47 m<sup>2</sup>

EI30

200,0

hp=0,0

225,0  
WEIN

EI30

110,0  
210,0

KL. SCHOD.  
Pu: 5,69 m<sup>2</sup>

C

hp=0,0

hp=0,0

hp=0,0

101,0  
180,0  
WEIN

100,0  
180,0  
WEIN

100,0  
180,0  
WEIN

101,0  
180,0  
WEIN

100,0  
180,0  
WEIN

100,0  
180,0  
WEIN

101,0  
150-85,0  
WEIN

100,0  
100,0-55,0  
WEIN

100,0  
180,0  
WEIN

139

230

230

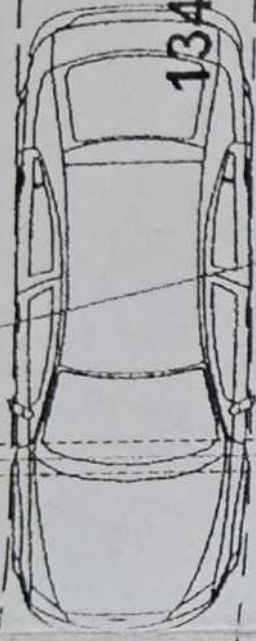
230

9d

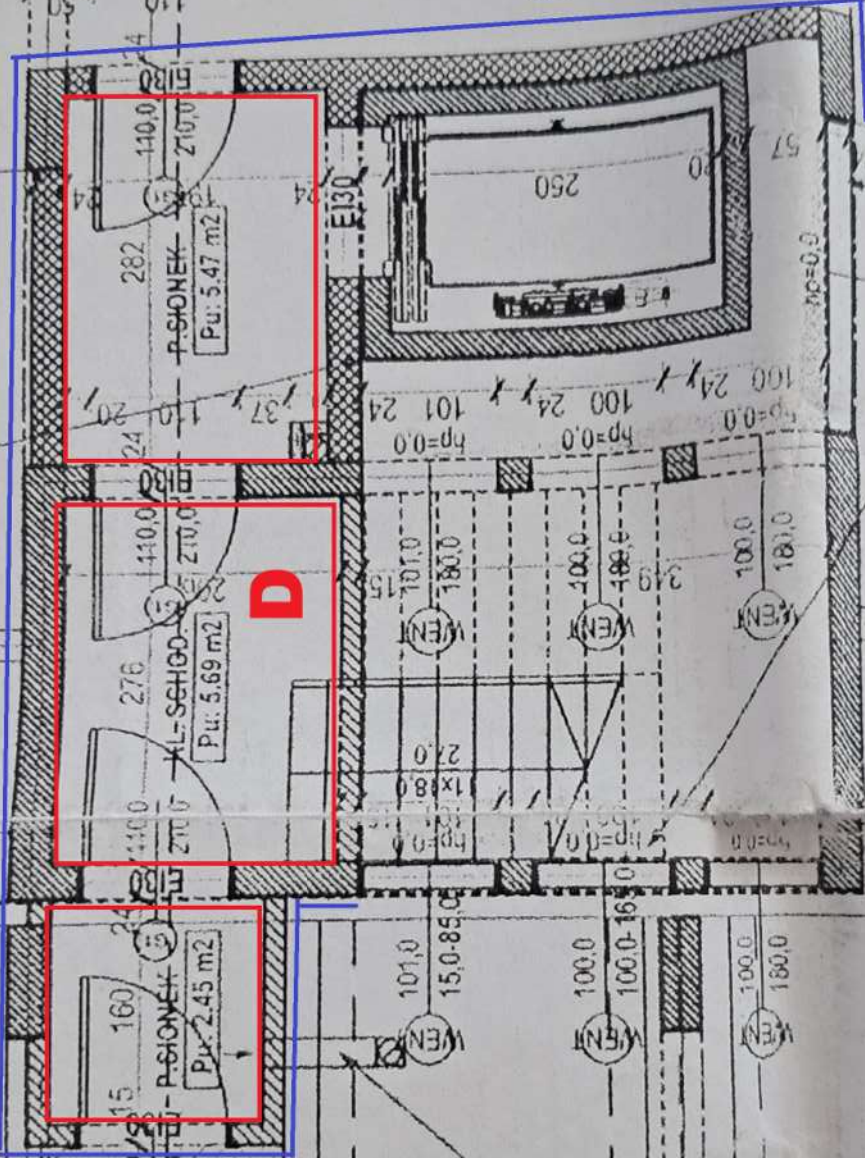
230

RYNOSTOKORYTO SŁĘKOWE USZALTOWANE W POSADZCE

ELEMENTY WENTYLACJI I ODMIANI  
133  
BARAZU - SZCZEGÓŁY PATRZ PROJ.



134



D

HYDRANT DN33

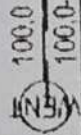
154

H33

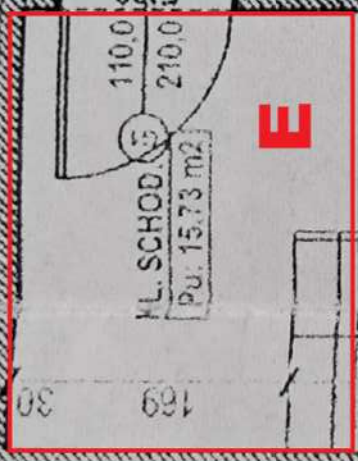
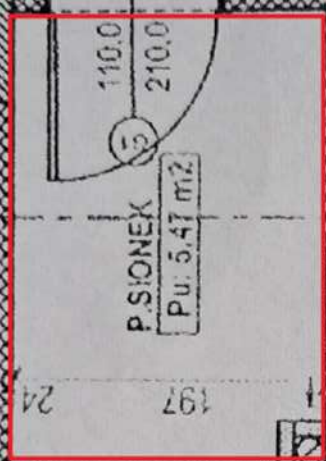
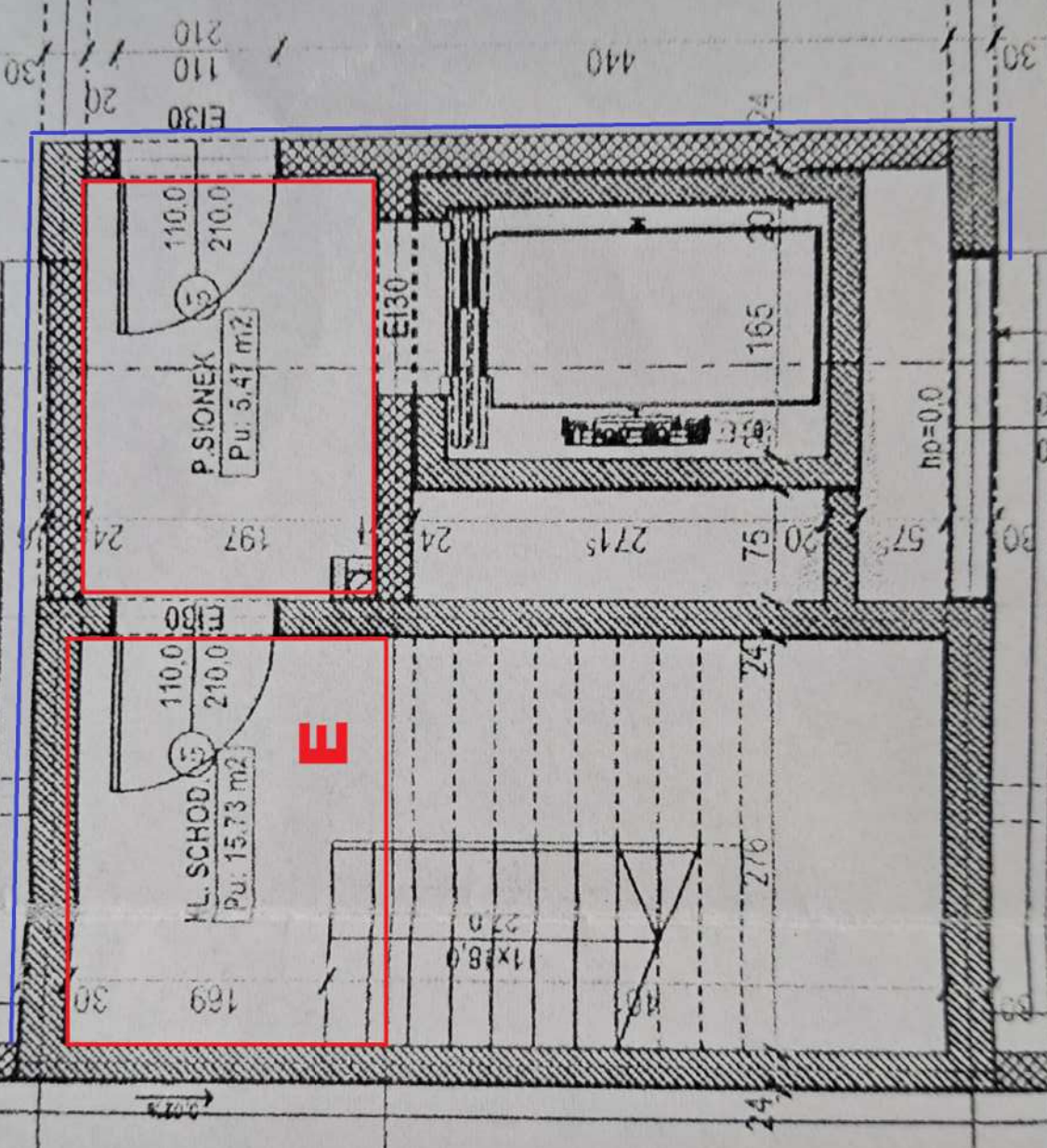
KANAŁ WENT. STALOWY  
ZABEZPIECZYĆ DO EI60

155

156



245



574

440

E130  
110  
210  
30

30

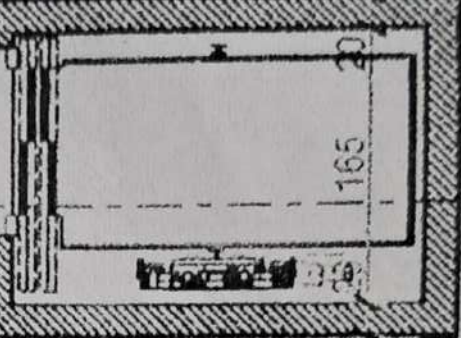
20

24

110,0  
210,0

P. SIONEX  
Pu. 5.47 m<sup>2</sup>

E130



no=0.0

24

197

24

274

75

20

57

WENT  
240,0  
225,0

E130

110,0  
210,0

KL. SCHOD.  
Pu. 15.73 m<sup>2</sup>

E

30

169

1x18,0  
22,0

24

270

24

30

